

# **hi**drive



**ISO 9001 QUALITY**  
Certified System



## **MAZDA BT-50**

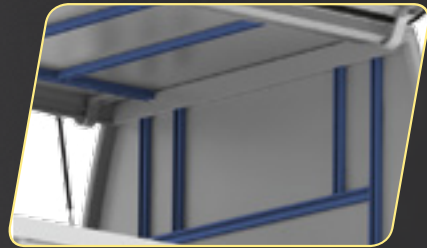
## **SERVICE BODIES**

The Mobile Workspace trusted by Mazda BT-50 owners across Australia



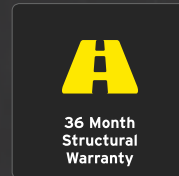
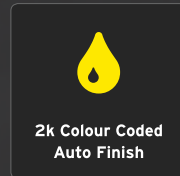
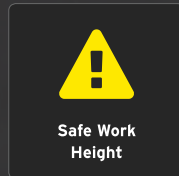
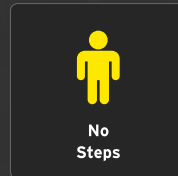
# LET THE HIDRIVE DIFFERENCE PUT YOU IN FRONT

Engineered Aluminium Co-Bonded Polymer modular design delivers a quantum leap forward in strength and reliability for all operating conditions.



#### INTERNAL INTEGRATED ACCESSORY FIXING TRACK

Easy, versatile, modular installation and re-positioning of internal fit-out inside the service body, eliminating the need for fixings to penetrate service body panels.



#### LED LIGHTING

Australian Design Rules (ADR) approved LED tail lights. Comply relevant ADR: 1/00, 6/00, 13/00, 48/00, 49/00, 60/00.



#### EXTERNAL INTEGRATED ACCESSORY FIXING TRACK

Safe and easy installation of external accessories that can be re-positioned without drilling service body panels.



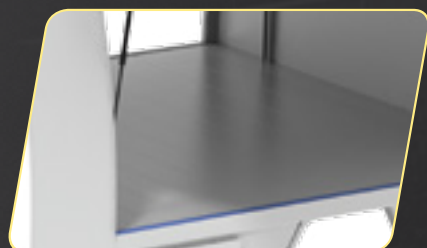
#### INTERNAL DUAL-ACTION ADJUSTABLE HINGE

Concealed adjustable hinges ensure that moving parts are out of the weather and provide optimum security.



#### ALUMINIUM POLYMER CO-BONDED CONSTRUCTION

Engineered aluminium fuselage with polymer co-bonded panels delivers lightest weight with unrivalled reliability.



#### FLUSH FLOOR SYSTEM

Your workspace is safe and easy to unload with clear access to tools for trade, shelving, and drawers.



#### DOOR OPEN SEAL

Creates gutter to channel water away, keeping your workspace dry while door is open.



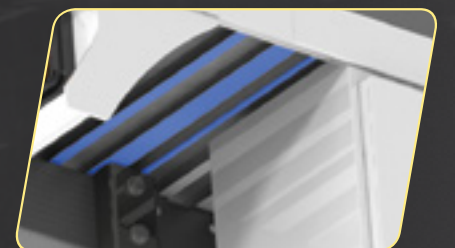
#### POSITIVE SEALING SYSTEM

Your workspace is positively sealed against dust and water ingress.



#### UNDER TRAY INTEGRATED ACCESSORY FIXING TRACK

Ensures versatile and positive fixing for under tray accessories such as water tanks and boxes.



#### COLOUR CODED 2K AUTOMOTIVE FINISHES

2K automotive paint finish. Matched to the vehicle in white or OEM metallic, with the assurance of easy maintenance and long lasting durability.



**ENGINEERED TO MINIMISE WEIGHT AND DELIVER MAXIMUM PAYLOAD**

Go to [www.hidrive.com.au](http://www.hidrive.com.au) to browse the full range of service bodies and accessories

**hidrive**  
bosston technology



# MAZDA BT-50 SINGLE CAB

## FULL CANOPY - 3 DOOR SERVICE BODY

2400mm body length



## PART CANOPY - 2 DOOR SERVICE BODY

2400mm overall length. Canopy lengths available: 1500mm, 1800mm & 2250mm



## TOOL MODULE - 2 DOOR SERVICE BODY

2400mm overall length. Tool module lengths available: 1200mm, 1800mm & 2400mm



Go to [www.hidrive.com.au](http://www.hidrive.com.au) to browse the full range of service bodies and accessories

**hidrive**  
bosston technology

# MAZDA BT-50 FREESTYLE CAB

## FULL CANOPY - 3 DOOR SERVICE BODY

2100mm body length



## PART CANOPY - 2 DOOR SERVICE BODY

2100mm overall length. Canopy lengths available: 1500mm & 1950mm



## TOOL MODULE - 2 DOOR SERVICE BODY

2100mm overall length. Tool module lengths available: 1200mm, 1800mm & 2100mm



Go to [www.hidrive.com.au](http://www.hidrive.com.au) to browse the full range of service bodies and accessories

**hidrive**  
bosston technology



# MAZDA BT-50 DUAL CAB

## FULL CANOPY - 3 DOOR SERVICE BODY

1650mm body length



## PART CANOPY - 2 DOOR SERVICE BODY

1650mm overall length. Canopy lengths available: 1200mm & 1500mm



## TOOL MODULE - 2 DOOR SERVICE BODY

1650mm overall length. Tool module lengths available: 1200mm & 1650mm



Go to [www.hidrive.com.au](http://www.hidrive.com.au) to browse the full range of service bodies and accessories

**hidrive**  
bosston technology

EXTERNAL ACCESSORIES - GENERAL



**UNDERFLOOR REAR DRAWER**  
**1520mm x 670mm x 130mm**  
Stock Code 2010

Excellent use of underbody area for secure storage. Rolls out for easy access. 1520mm suits Dual Cab utes. Check with HiDrive for compatibility



**UNDERFLOOR REAR DRAWER**  
**1920mm x 670mm x 130mm**  
Stock Code 2011

Excellent use of underbody area for secure storage. Rolls out for easy access. 1920mm suits Extra and Single Cab utes. Check with HiDrive for compatibility



**ALUMINIUM BOX 430mm**  
**STOCK SIZE - REAR R.H.S.**  
Stock Code 22114303

Undertray aluminium trades box, standard size, fitted rear/RHS. Custom box may be required on some vehicles. Check with HiDrive for compatibility



**ALUMINIUM BOX 430mm**  
**STOCK SIZE - REAR L.H.S.**  
Stock Code 22114304

Undertray aluminium trades box, standard size, fitted rear/LHS. Custom box may be required on some vehicles. Check with HiDrive for compatibility



**ALUMINIUM BOX FULL SIZE**  
**CUSTOM - FRONT L.H.S.**  
Stock Code 2210001

Profiled undertray aluminium box custom fitted to use all available space in front/LHS



**ALUMINIUM BOX FULL SIZE**  
**CUSTOM - FRONT R.H.S.**  
Stock Code 2210002

Profiled undertray aluminium box custom fitted to use all available space in front/RHS



**ALUMINIUM BOX FULL SIZE**  
**CUSTOM - REAR R.H.S.**  
Stock Code 2210003

Profiled undertray aluminium box custom fitted to use all available space in rear/RHS



**ALUMINIUM BOX FULL SIZE**  
**CUSTOM - REAR L.H.S.**  
Stock Code 2210004

Profiled undertray aluminium box custom fitted to use all available space in rear/LHS

EXTERNAL ACCESSORIES - GENERAL



**UNDERBODY INFILL**  
**PANEL FRONT L.H.S.**  
Stock Code 2240001

Profiled custom fitted undertray infill panel custom front/LHS



**UNDERBODY INFILL**  
**PANEL FRONT R.H.S.**  
Stock Code 2240002

Profiled custom fitted undertray infill panel custom front/RHS



**UNDERTRAY POLY WATER**  
**TANK/15LTR/SOAP DISP**  
Stock Code 2262

Rectangular 15 litre undertray water tank with soap dispenser



**BI-FOLD DOOR**  
Stock Code 2000

For roadside work where the full gullwing door may be close to traffic



**REAR RACK REMOVABLE**  
**FULL WIDTH 1375mm**  
Stock Code 2191

1375mm full width removable rear rack



**REAR RACK REMOVABLE**  
**PART WIDTH 570mm**  
Stock Code 2191002

570mm part width removable rear rack for Tool Module (ITM Series) bodies



**FRONT/REAR BONDED**  
**GLASS WINDOW FITTED**  
Stock Code 2352

Bonded automotive glass profiled window



**TSHAPE CARGO/LOADNET**  
**COVER/REAR TRAY & AISLE**  
Stock Code 239001

T Shape load net for Tool Module (ITM Series) service bodies



**RECTANGULAR CARGO/**  
**LOADNET COVER/REAR TRAY**  
Stock Code 239002

Rectangular load net for Part Canopy (IPC Series) service bodies



EXTERNAL ACCESSORIES - GENERAL



SPARE WHEEL HOLDER  
REAR EXTERNAL

Stock Code 2370

Locking spare wheel holder



SINGLE BOTTLE RESTRAINT  
215MM TRACK

Stock Code 3060

Single bottle restraint with  
camlok strap



TWIN BOTTLE RESTRAINT  
430MM TRACK

Stock Code 3070

Twin bottle restraint with  
camlok straps



STS FOLDING STEP  
FITTED TO TOWBALL

Stock Code 243001

Folding step fitted to towball  
for easy access to rear tray  
area if required



FUEL DRUM/JERRYCAN  
RESTRAINT 430mm TRACK

Stock Code 3080

Jerry can restraint with  
camlok strap



FIRST AID R2 REMOTE  
LEVEL 2

Stock Code 6060

Level 2 industry 1st aid kit



HI VIS REFLECTIVE STRIPE  
50mm YELLOW

Stock Code 6085

Hi-Vis safety



WHEEL NUT INDICATORS  
FITTED / YELLOW

Stock Code 6092

Wheel nut safety indicators



WHEEL CHOCKS  
AND BRACKET/PR

Stock Code 6095

Safety chocks

EXTERNAL ACCESSORIES - ROOF MOUNTED



AERO ROOF VENT  
VENTURI TYPE

Stock Code 2330

Venturi action Aero style vent



HIDRIVE COMMERCIAL  
ROOF BAR 1375mm 3 KIT

Stock Code 2061003

1375mm commercial roof bar kit  
for trade use. 3pce lit to suit IPC  
and ICY series service bodies



HIDRIVE TOOL MODULE ROOF  
BAR KIT/5 BARS

Stock Code 2064010

Commercial roof bar for trade use.  
5pce kit to suit Tool Module (ITM  
Series) service bodies



2.6MTR STEP LADDER  
SLIDE WITH ROLLER

Stock Code 20380

Fast and easy storage for step  
ladders. Never run the risk losing  
your ladder in transit



3.0MTR EXTENSION LADDER  
SLIDE WITH ROLLER

Stock Code 20382

Fast and easy storage for  
extension ladders. Never run the  
risk losing your ladder in transit



LADDER CABLE LOCK

Stock Code 2152

Anti-Theft ladder cable lock



CONDUIT CARRIER  
100mm X 3100mm

Stock Code 2071

3100 x 100mm Conduit carrier  
with locking end caps



CONDUIT CARRIER  
100mm X 4100mm

Stock Code 2070

4100 x 100mm Conduit carrier  
with locking end caps



HIDRIVE TRADES RACK  
1800L/1310W

Stock Code 2033

1800mm Long, commercial  
grade aluminium roof rack  
compatible with various trade  
related accessories



## EXTERNAL ACCESSORIES - ROOF MOUNTED



### HIDRIVE TRADES RACK 2400L/1310W

Stock Code 2034

2400mm Long, commercial grade aluminium roof rack compatible with various trade related accessories



### HIDRIVE TRADES RACK 2800L/1310W

Stock Code 2035

2800mm Long, commercial grade aluminium roof rack compatible with various trade related accessories



### HIDRIVE TRADES RACK 3200L/1310W

Stock Code 2036

3200mm Long, commercial grade aluminium roof rack compatible with various trade related accessories



### LADDER ROLLER - 600MM

Stock Code 2041

Ladder roller compatible with Hidrive commercial roof bars and Trades racks



### TRADES RACK LADDER HOOKS/PAIR

Stock Code 2046

Pair of ladder hooks for ladder restraint



### CAMBUCKLE LADDER STRAP/SNAPHOOK

Stock Code 2151

Quick release cambuckle strap

## EXTERNAL ACCESSORIES - SUSPENSION & TOWING



### SUSPENSION REAR LEAF

OEM rear spring upgrade



### SUSPENSION REAR LEAF+SHOCK

OEM rear spring upgrade and EFS replacement shocks



### H/D TOWBAR INCLUDING WIRING

Commercial towpack

[WWW.HIDRIVE.COM.AU](http://WWW.HIDRIVE.COM.AU)

## INTERNAL ACCESSORIES - GENERAL



### RUBBER MAT/HOLED 10mm 1.8M WIDE/PER MTR

Stock Code 3300

Heavy duty 10mm holed rubber mat profiled to suit HiDrive service body



### SHELVING KIT/3 TIER 600mm LONG

Stock Code 31820

600mm long shelving bay kit with 3 elevated levels of shelving



### PARTS BINS/9PCE/SUIT #31820 SHELVING

Stock Code 320005

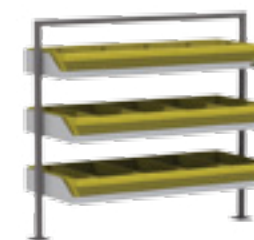
Tough parts bins with adjustable dividers 9pce to suit #31820 shelving kit



### SHELVING KIT/3 TIER 980mm LONG

Stock Code 31700

980mm long shelving bay kit with 3 elevated levels of shelving



### PARTS BINS/15PCE/SUIT #31700 SHELVING

Stock Code 320003

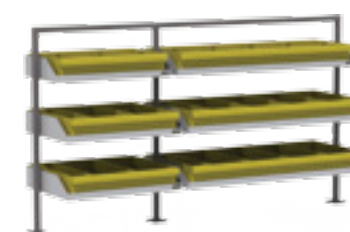
Tough parts bins with adjustable dividers, 15pce to suit #31700 shelving kit



### SHELVING KIT/3 TIER 1555mm LONG

Stock Code 31880

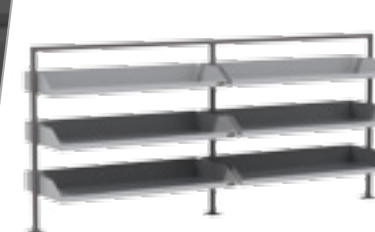
1555mm long shelving bay kit with 3 elevated levels of shelving



### PARTS BINS/24PCE/SUIT #31880 SHELVING

Stock Code 320006

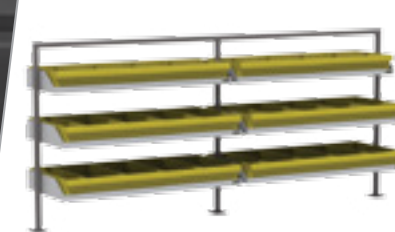
Tough parts bins with adjustable dividers 24pce to suit #31880 shelving kit



### SHELVING KIT/3 TIER 1935mm LONG

Stock Code 31760

1935mm long shelving bay kit with 3 elevated levels of shelving



### PARTS BINS/30PCE/SUIT #31760 SHELVING

Stock Code 320004

Tough parts bins with adjustable dividers 30pce to suit #31760 shelving kit

**hidrive**





INTERNAL ACCESSORIES - GENERAL



CABLE REEL HOLDER  
FULL BAY

Stock Code 3150

Cable reel holder to fit full length shelving bay/925mm long



CABLE REEL HOLDER  
HALF BAY

Stock Code 3151

Cable reel holder to fit half length shelving bay/540mm long



MESH DIVIDER  
600L x 850H FITTED

Stock Code 30021

600mm long x 850mm high  
Internal dividing panel with modular fixings



MESH DIVIDER  
980L x 850H FITTED

Stock Code 30022

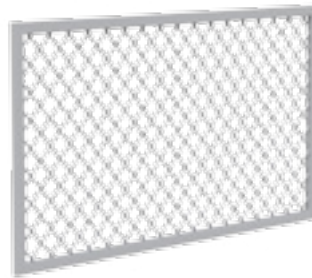
980mm long x 850mm high  
Internal dividing panel with modular fixings



MESH DIVIDER  
1200L x 850H FITTED

Stock Code 30023

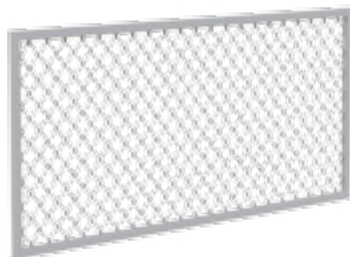
1200mm long x 850mm high  
Internal dividing panel with modular fixings



MESH DIVIDER  
1555L x 850H FITTED

Stock Code 30024

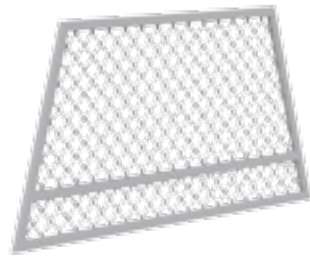
1555mm long x 850mm high  
Internal dividing panel with modular fixings



MESH DIVIDER  
1935L x 850H FITTED

Stock Code 30025

1935mm long x 850mm high  
Internal dividing panel with modular fixings



MESH DIVIDER/TAPERED  
1700/1200 X 850H

Stock Code 30031

1700mm long x 850mm high  
tapered Internal dividing panel



MESH INTERNAL ROOF SHELF  
800 x 600 x 250H

Stock Code 30210

800mm x 600mm x 250mm  
internal roof shelf



MESH INTERNAL ROOF SHELF  
980 x 800 x 250H

Stock Code 30211

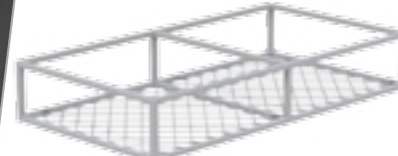
980mm x 800mm x 250mm  
internal roof shelf



MESH INTERNAL ROOF SHELF  
1200 x 800 x 250H

Stock Code 30212

1200mm x 800mm x 250mm  
internal roof shelf



MESH INTERNAL ROOF SHELF  
1555 x 800 x 250H

Stock Code 30213

1555mm x 800mm x 250mm  
internal roof shelf



MESH INTERNAL ROOF SHELF  
1935 x 800 x 250H

Stock Code 30214

1935mm x 800mm x 250mm  
internal roof shelf



HIDRIVE TOOL MODULE  
SHELVING DIVIDER

Stock Code 3003

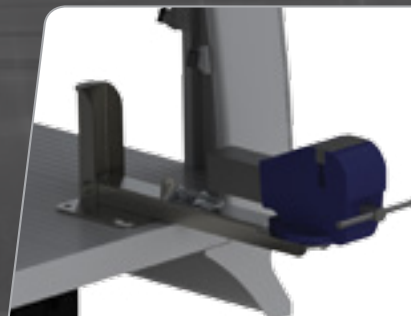
Shelf divider frame for use in  
Tool module (ITM Series)  
service bodies



TOOL MODULE  
ADJUSTABLE SHELF

Stock Code 3026

Adjustable shelf for Tool module  
service bodies (ITM series)



RECORD 4" ENG VICE  
& FOLD DOWN HOLDER

Stock Code 3270001

100mm vice fitted to folding vice  
holder for easy compact storage



FOLD DOWN WORKBENCH  
600 x 300mm/FLUSH

Stock Code 3414

Auxiliary folding workbench  
600mmx 300mm



FOLD DOWN WORKBENCH  
900 x 300mm/FLUSH

Stock Code 3415

Auxiliary folding workbench  
900mmx 300mm



## INTERNAL ACCESSORIES - GENERAL



**GENERATOR SLIDE  
610 x 370/575 x 310 TRAY**  
Stock Code 3428  
Generator slide 575 x 310mm  
internal tray size



**LOAD RESTRAINT TRACK  
& ANCHOR KIT/1.4MTR**  
Stock Code 3041140  
1400mm long load restraint  
tracks and adjustable/removable  
anchor points.



**LOAD RESTRAINT TRACK  
& ANCHOR KIT/1.5MTR**  
Stock Code 3041150  
1500mm long load restraint  
tracks and adjustable/removable  
anchor points



**LOAD RESTRAINT TRACK  
& ANCHOR KIT/1.7MTR**  
Stock Code 3041170  
1700mm long load restraint  
tracks and adjustable/removable  
anchor points



**LOAD RESTRAINT TRACK  
& ANCHOR KIT/1.9MTR**  
Stock Code 3041190  
1900mm long load restraint  
tracks and adjustable/removable  
anchor points.



**AIR REEL/MACNAUGHT  
12.5mm x 15MTR**  
Stock Code 3330  
Macnaught 15 metre retracting  
air hose reel



**FIRE EXTINGUISHER 1.5KG  
ABE INCL BRACKET**  
Stock Code 3340  
1.5Kg ABE fire extinguisher  
and restraint bracket



**FIRE EXTINGUISHER 4.5KG  
ABE & BRACKET**  
Stock Code 3347  
4.5Kg ABE fire extinguisher and  
restraint bracket



**RESTRAINT EYE BOLTS M10  
INC NUT/4 PACK**  
Stock Code 21411  
Restraint eye bolts/4pce pack

## INTERNAL ACCESSORIES - DRAWERS & CASES



**VEHICLE DRAWER 460 x 600 x 435mm 4 TIER**  
Stock Code 604606004354  
600W x 460L x 435H 4 drawer unit



**VEHICLE DRAWER  
460x 460 x 547 4 TIER**  
Stock Code 604604605474  
460W x 460L x 547H  
4 drawer unit



**VEHICLE DRAWER  
460 x 460 x 273.5 2 TIER**  
Stock Code 604604602742  
460W x 460L x 273H  
2 drawer unit



**VEHICLE DRAWER  
460 x 810 x 273.5 1 TIER**  
Stock Code 604608102741  
460W x 810L x 273H  
1 drawer unit



**VEHICLE DRAWER  
920 x 460 x 182 1 TIER**  
Stock Code 604609201821  
920W x 460L x 182H  
1 drawer unit



**ROLA CABINET INCL 2  
85mm CASES/220H**  
Stock Code RCSK1/C  
420W x 460L x 220H  
Rola cabinet and cases



**ROLA CABINET INCL 2  
130mm CASES/325H**  
Stock Code RCSK3/C  
420W x 460L x 325H  
Rola cabinet and cases



**ROLA CABINET INCL 2 85mm  
PLUS 2 130mm CASES 547H**  
Stock Code RCSK5/C  
420W x 460L x 547H  
Rola cabinet and case



## ELECTRICAL ACCESSORIES - LOCKING & SECURITY



### SECURITY ALARM

OEM upgrade and Security alarm  
to HiDrive service body

### LIGHT, LOCK & GO KIT 2 DOOR

Stock Code 4900

Light, Lock & Go Kit  
for 2 door  
service body

### LIGHT, LOCK & GO KIT 3 DOOR

Stock Code 4901

Light, Lock & Go Kit  
for 3 door  
service body

## ELECTRICAL ACCESSORIES - GENERAL



### DUAL BATTERY & 20A CHARGER

Stock Code 403110

Dual battery system  
with Redarc charger



### 12-240V PURE SINE WAVE INVERTER 300W

Stock Code 4100

12V DC to 300W 240V AC pure  
sine wavepower inverter



### 12-240V PURE SINE WAVE INVERTER 600W

Stock Code 4101

12V DC to 600W 240V AC pure  
sine wave power inverter



### 12-240V PURE SINE WAVE INVERTER 1500W

Stock Code 4102

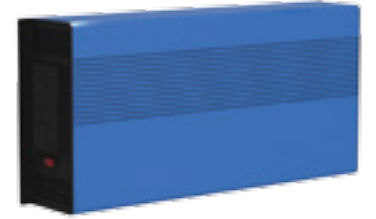
12V DC to 1500W 240V AC pure  
sine wave power inverter



### 12-240V PURE SINE WAVE INVERTER 2000W

Stock Code 4103

12V DC to 2000W 240V AC pure  
sine wave power inverter



### 12-240V PURE SINE WAVE INVERTER 3000W

Stock Code 4104

12V DC to 3000W 240V AC pure  
sine wave power inverter



### LED WORKLIGHT (ROUND)

Stock Code 4122

Round slimline  
LED work light



### LED WORKLIGHT/LGE ROUND WITH HANDLE

Stock Code 412201

Large round LED work light  
with handle



### ISOLATION SWITCH/BATTERY RED LOCKOUT

Stock Code 4034

Battery isolation switch with  
red lockout lever



## ELECTRICAL ACCESSORIES - GENERAL



### ISOLATION SWITCH/STARTER YELLOW LOCKOUT

Stock Code 403401

Starter isolation switch with  
yellow lockout lever



### ANDERSON PLUG CONNECTOR/50AMP

Stock Code 4560

50 AMP Anderson  
plug connector



### ANDERSON PLUG CONNECTOR 175AMP

Stock Code 4561

175 AMP Anderson  
plug connector

## ELECTRICAL ACCESSORIES WARNING & EMERGENCY



### MINE BAR LED BEACON 1200L

Stock Code 4801

1200mm high mount safety mine  
bar with LED lighting



### MINE BAR/LED BEACON 2 x WORKLIGHT/1200L

Stock Code 4803

1200mm high mount safety mine  
bar with LED lighting and  
LED worklights



### 1.5M WHIP AERIAL FLAG DETACHABLE BASE/LED

Stock Code 4325

1.5mtr aerial safety  
whip aerial



### ANDERSON PLUG CONNECTOR/350AMP

Stock Code 4562

350 AMP Anderson  
plug connector

## ELECTRICAL ACCESSORIES WARNING & EMERGENCY



### AMBER BEACON HALOGEN ROTATOR

Stock Code 4050

Amber safety beacon  
with halogen rotator



### AMBER BEACON LED STROBE

Stock Code 4070

Amber LED safety  
strobe beacon

## ELECTRICAL ACCESSORIES - REVERSING SAFETY



### SMART PARK REVERSE CAM KIT - MMS/SMC

Stock Code 4205

Smart Park commercial reversing camera  
with mirror mount monitor



### SMART PARK COMMERCIAL REVERSE SENSORS

Stock Code 4190

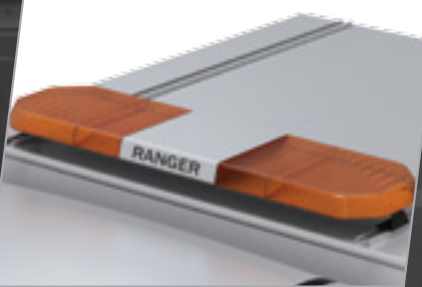
Smart Park commercial safety  
reversing sensor system



### LED MINI BAR BEACON AMBER - 330mm VARI FLASH

Stock Code 4062

Amber LED mini light bar



### LIGHTBAR/1200mm AMBER LED

Stock Code 4053

Commercial LED lightbar/Amber  
high intensity variable flash  
pattern switched in cab



### LED STROBE FLASHER MODULE - AMBER

Stock Code 4060

150mm Amber safety  
strobe flasher module



### REVERSE ALARM 97DB

Stock Code 4160

97dBa reverse alarm.



### REVERSE ALARM BROADBAND QUACKER 92DB

Stock Code 4161

92dBa broadband (quacker) reverse alarm

# **HIDRIVE MAZDA BT-50**

## **SERVICE BODIES DELIVER A SAFE MOBILE WORKSPACE THAT KEEPS VALUED EQUIPMENT SECURE AND ACCESSIBLE WHATEVER THE CONDITIONS**

HIDRIVE is a trademark of Bison Group P/L, which is a 100% Australian owned private company, with its own vertically integrated manufacturing operations in Australia.

Bison Group. Australian manufacturing excellence:

- Excellence in our people.
- Excellence in design.
- Excellence in operations.
- Excellence in lean manufacturing methodologies.
- Excellence in systems and quality management.



**hidrive**  
bosston technology



**BISON GROUP P/L**

ABN: 30 585 382 877

© Bison Group P/L All rights reserved

**1300 368 161**

**+61 2 4822 8498**

**team.aus@bisongroup.com.au**

**Sydney NSW**  
10 Garner Place,  
Ingleburn NSW 2565

**Melbourne VIC**  
11 Quinn Drive  
Keilor Park VIC 3042

**Manufacturing Plant**  
17 O'Sullivan Place,  
Goulburn NSW 2580