

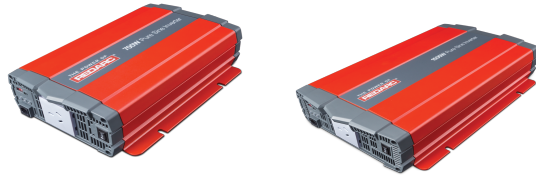


**hidrive**  
MAKE CERTAIN

# ***SERVICE BODY ACCESSORIES***

Accessories to fitout your service body to  
get the job done right.

MADE  
HERE, FOR  
**CERTAIN**



## REDARC INVERTER

12V or 24V DC – 240V AC. REDARC pure sine wave with overload, short circuit and over temperature protection. Load controlled cooling fan. Includes cabling.

### Options:

- 350W
- 700W
- 1000W
- 1500W
- 2000W

### Features & Benefits:

- Lets you safely run devices such as laptops, drones, power tools and fridges from the convenience of your vehicle service body
- Perfect for working in remote locations and while out on the road
- Built to last with a range of safety features and housed in a strong aluminium shell

### Details:

✓ Compatibility	Ute, Trailer, Truck
🛡 Warranty	24 Month manufacturers warranty

[VIEW ONLINE](#)

---

## REDARC INVERTER 350W



---

## REDARC INVERTER 700W



---

## REDARC INVERTER 1000W



## REDARC INVERTER 1500W



---

## REDARC INVERTER 2000W





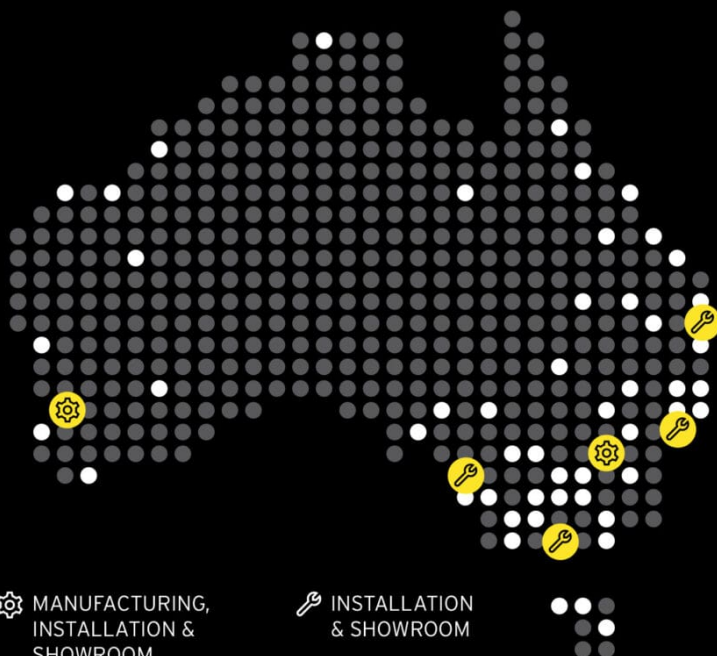


Chat with one of our helpful Mobile Workspace Specialists.

→ **1300 350 625**

→ [team.aus@hidrive.com.au](mailto:team.aus@hidrive.com.au)

→ [hidrive.com.au](https://hidrive.com.au)



Hidrive is the only manufacturer of service bodies for utes, trailers and trucks with a company-owned national installation network.



**Eastern Manufacturing, Installation & Showroom**  
17 O'Sullivan Pl, Goulburn NSW 2580



**Brisbane Showroom & Installation**  
146 Crockford St, Northgate QLD 4013



**Melbourne Showroom & Installation**  
57 Hunter Rd, Derrimut VIC 3026



**Western Manufacturing, Installation & Showroom**  
18 Catalano Rd, Canning Vale WA 6155



**Sydney Showroom & Installation**  
10 Garner Pl, Ingleburn NSW 2565



**Adelaide Showroom & Installation**  
6 Worriga St, Regency Park SA 5010