

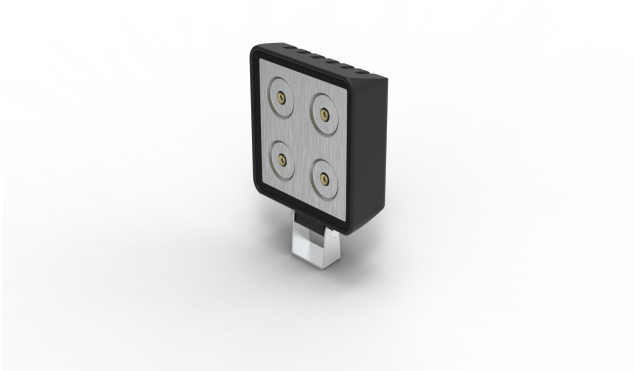


**hidrive**  
MAKE CERTAIN

# ***SERVICE BODY ACCESSORIES***

Accessories to fitout your service body to get the job done right.

MADE  
HERE, FOR  
**CERTAIN**



## **LED AUXILIARY REVERSE LIGHT, 12-24V**

Spot pattern LED auxiliary reverse light

### **Features & Benefits:**

- Additional reverse light

### **Details:**

✔ Compatibility	Ute, Trailer
✔ Warranty	12 Month manufacturers warranty

[VIEW ONLINE](#)



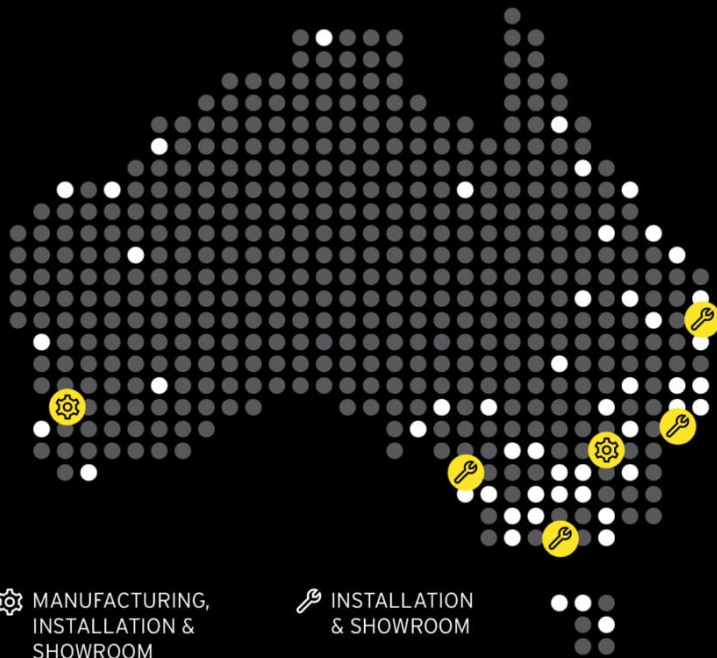


Chat with one of our helpful Mobile Workspace Specialists.

→ 1300 350 625

→ team.aus@hidrive.com.au

→ hidrive.com.au



MANUFACTURING, INSTALLATION & SHOWROOM

INSTALLATION & SHOWROOM

Hidrive is the only manufacturer of service bodies for utes, trailers and trucks with a company-owned national installation network.



Eastern Manufacturing, Installation & Showroom  
17 O'Sullivan Pl, Goulburn NSW 2580



Brisbane Showroom & Installation  
146 Crockford St, Northgate QLD 4013



Melbourne Showroom & Installation  
57 Hunter Rd, Derrimut VIC 3026



Western Manufacturing, Installation & Showroom  
18 Catalano Rd, Canning Vale WA 6155



Sydney Showroom & Installation  
10 Garner Pl, Ingleburn NSW 2565



Adelaide Showroom & Installation  
6 Wirriga St, Regency Park SA 5010