

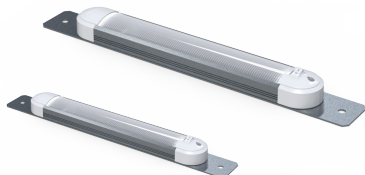


**hidrive**  
MAKE CERTAIN

# ***SERVICE BODY ACCESSORIES***

Accessories to fitout your service body to  
get the job done right.

MADE  
HERE, FOR  
**CERTAIN**



## **LED INTERIOR STRIP LIGHT**

12 - 24V input.  
LED interior light with switch

### **Options:**

- 260mm
- 590mm

### **Features & Benefits:**

- Fitted inside cab for additional interior lighting
- Light Lock & Go kit can be upgraded to include the 590mm light

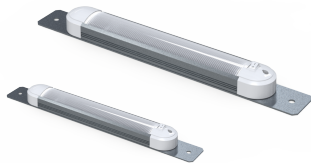
### **Details:**

✓ Compatibility	Ute, Trailer, Truck
🛡 Warranty	12 Month manufacturers warranty

**VIEW ONLINE**

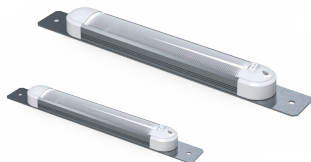
---

## LED INTERIOR STRIP LIGHT 260mm



---

## LED INTERIOR STRIP LIGHT 590mm







Chat with one of our helpful Mobile  
Workspace Specialists.

→ **1300 350 625**

→ [team.aus@hidrive.com.au](mailto:team.aus@hidrive.com.au)

→ [hidrive.com.au](https://hidrive.com.au)



Hidrive is the only manufacturer of service bodies for  
utes, trailers and trucks with a company-owned national  
installation network.



**Eastern Manufacturing, Installation & Showroom**  
17 O'Sullivan Pl, Goulburn NSW 2580



**Brisbane Showroom & Installation**  
146 Crockford St, Northgate QLD 4013



**Melbourne Showroom & Installation**  
57 Hunter Rd, Derrimut VIC 3026



**Western Manufacturing, Installation & Showroom**  
18 Catalano Rd, Canning Vale WA 6155



**Sydney Showroom & Installation**  
10 Garner Pl, Ingleburn NSW 2565



**Adelaide Showroom & Installation**  
6 Worriga St, Regency Park SA 5010