

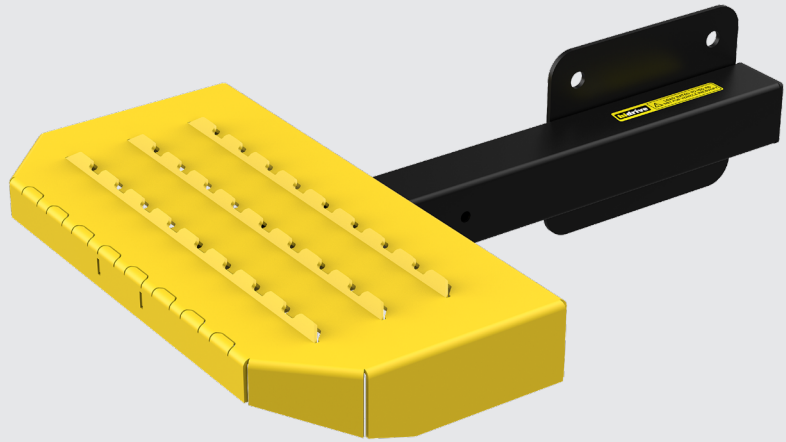


REAR STEP - TOWBAR MOUNTED

OVERVIEW

Designed, tested, and made in Australia. The Hidrive Rear Step provides safe and secure access to the roof of your service body. The rear step is mounted at either end of any Hidrive ute towbar and provides ample clearance while towing a trailer.

The rear step can be fitted at the time of towbar installation or retrofitted to an existing Hidrive ute towbar. A kit is also available for purchase which includes a pair of steps and fitting hardware.



TECHNICAL SPECIFICATIONS

Material:	Steel
Dimensions:	485-560mm L x 150mm H x 410mm W Tread: 210mm L x 410mm W
Weight:	6.1kg each
Load Rating:	150kg
Finish:	Tread - Safety Yellow, Powdercoat with Texture Arm - Black, Powdercoat
Vehicle Fitment:	Compatible with any Hidrive ute towbar

FEATURES & BENEFITS



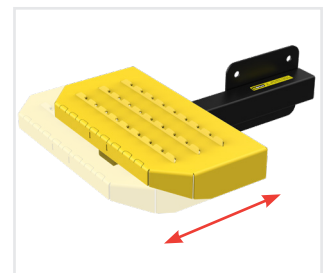
Complete Kit = Pair of Steps + Mounting Hardware



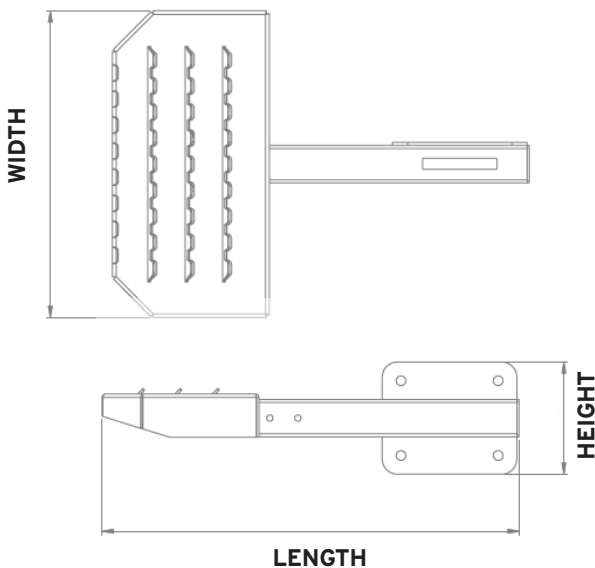
Universal Design and Easy Fitment



Non-slip grip surface



Adjustable tread position



CONTACT US

To find out more please contact your Hidrive Mobile Workspace Specialist to discuss your needs.

www.hidrive.com.au 1300 325 845

